

CALIFORNIA'S NEWEST PARKS ARE UNDERWATER



Marina Interagency Coordinating Committee

Sacramento, April 26, 2017

*Rikki Eriksen (Grober-Dunsmore), Ph.D.
California Marine Sanctuary Foundation*

TODAY'S TALK



1. Provide an overview of the statewide network of California's marine protected areas
2. Explore ways that MPAs, marinas, and water quality improvement actions can work together on statewide outreach and education for ocean health
3. Share a funding opportunity for assisting harbors and marinas to improve storm water

Throughout this, we want to gain your insights and suggestions for future collaborations

A scenic view of a snow-covered valley with a river in the foreground, surrounded by tall, rocky mountains under a clear blue sky. The scene is captured in a wide-angle shot, showing the vastness of the landscape. The snow is thick and covers the ground, trees, and parts of the mountains. The river flows through the center of the valley, reflecting the surrounding scenery. The mountains are rugged and have some snow on their peaks and ledges. The sky is a clear, pale blue, suggesting a bright day. The overall atmosphere is serene and majestic.

CALIFORNIA'S LONG HISTORY OF LEADERSHIP IN
PROTECTING SPECIAL PLACES

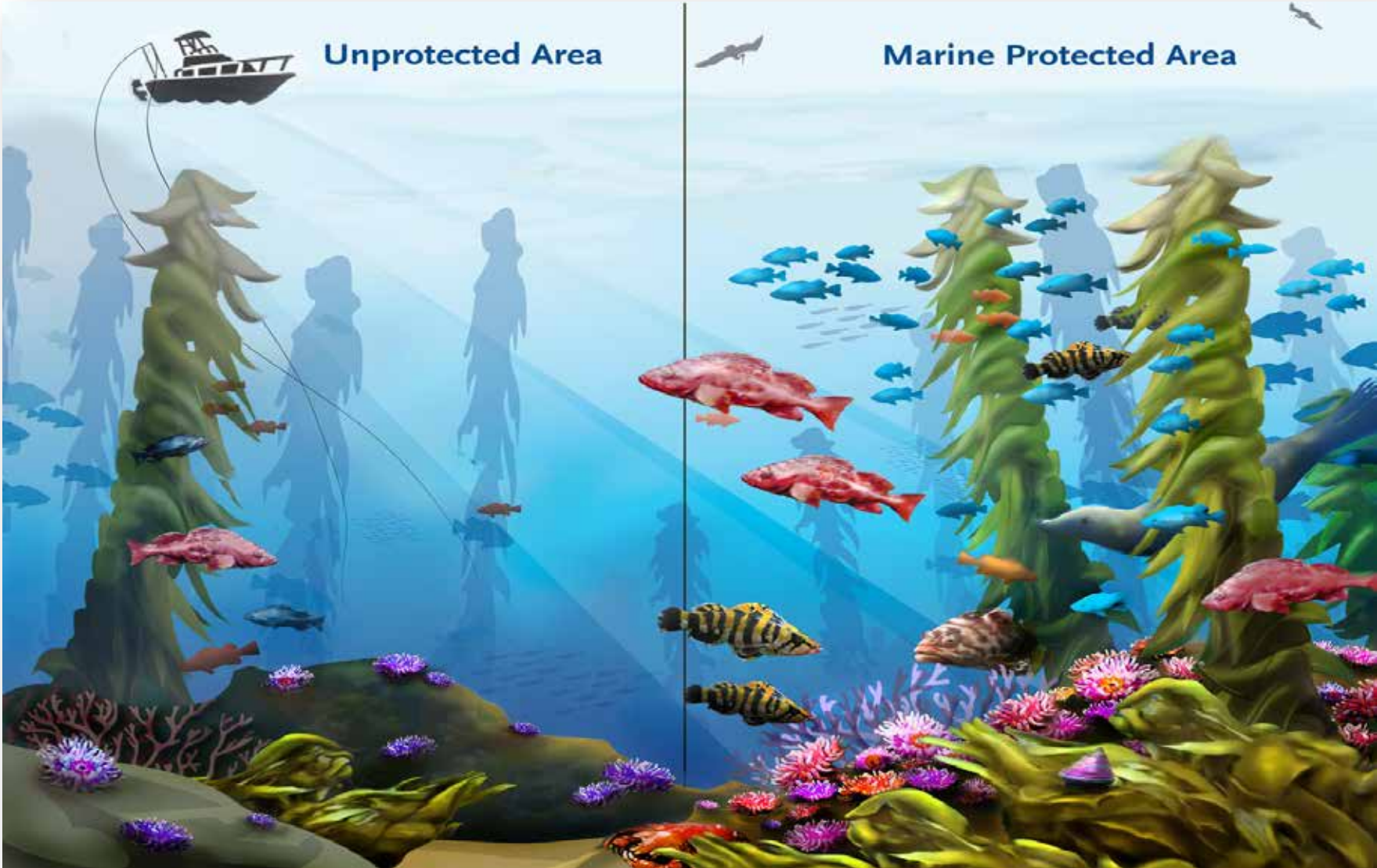
PROBLEMS BENEATH THE WAVES

- 90% of big fish that existed in 1950s are gone
- Three-fourths of California's kelp forest disappeared since 1960s.
- 1990's West coast groundfish fishery collapse
- All five commercial abalone fisheries closed



Our oceans are not what they were 100 yrs ago

WHAT IS A MARINE PROTECTED AREA?



MAKING A DIFFERENCE AROUND THE WORLD



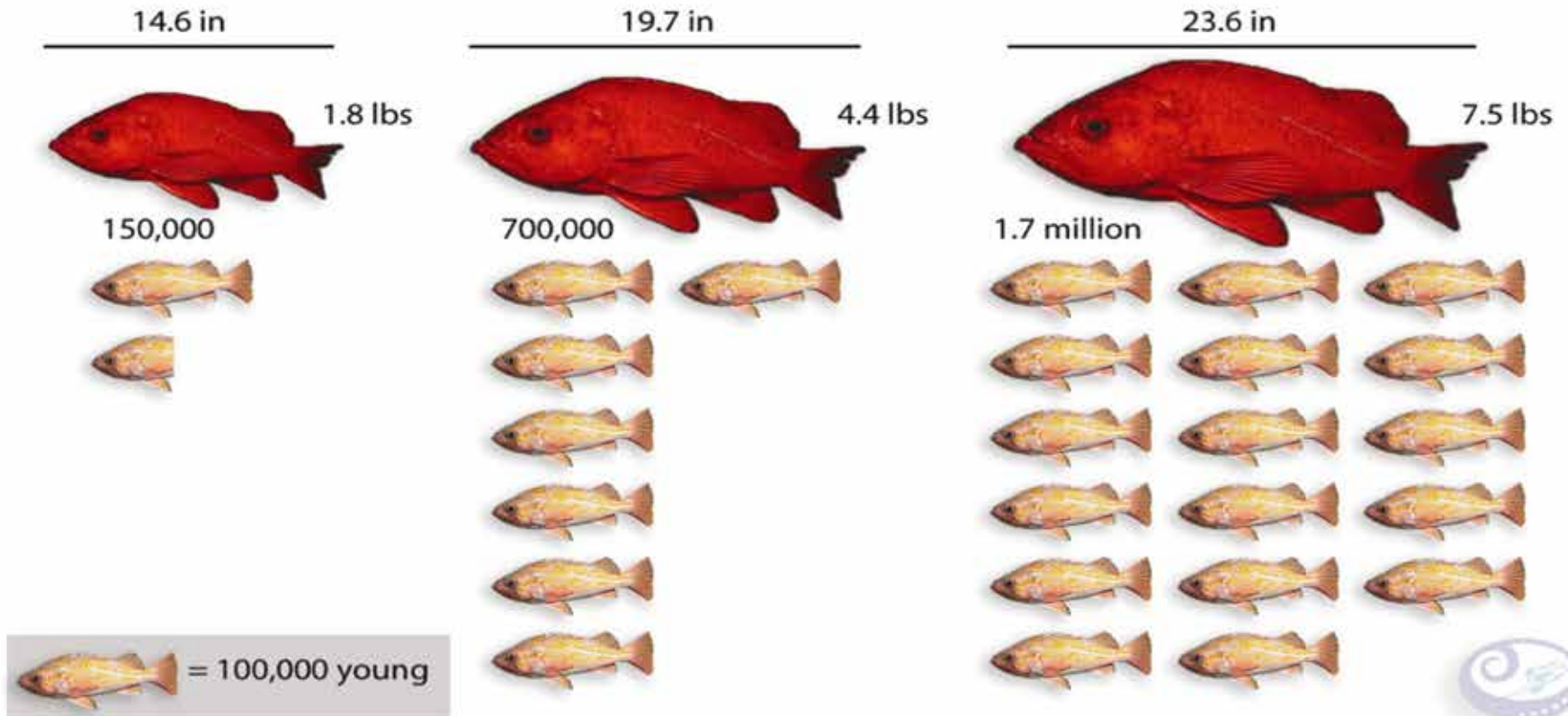
Work effectively for ecological, economic, recreational and cultural benefits around the world

PROTECTING OCEAN ECOSYSTEMS....



NOT JUST SINGLE SPECIES

SAFEGUARDING THE BOFFFS: BIG OLD FERTILE FEMALE FISH



Average numbers of young produced by three different sizes of vermilion rockfish.
Data: Love et al. (1990) NOAA Technical Report

- Protecting spawning stock is critical
- MPAs provide a place for old females to replenish the population

SPILOVER



CALIFORNIA RECOGNIZES THE NEED TO CREATE A NETWORK OF UNDERWATER PROTECTED AREAS



**IT'S TIME
TO PROTECT
OUR YOSEMITES
OF THE SEA**

- 1999 California took bold action
- Managing Agency California Department of Fish and Wildlife

A NOAH'S ARK APPROACH



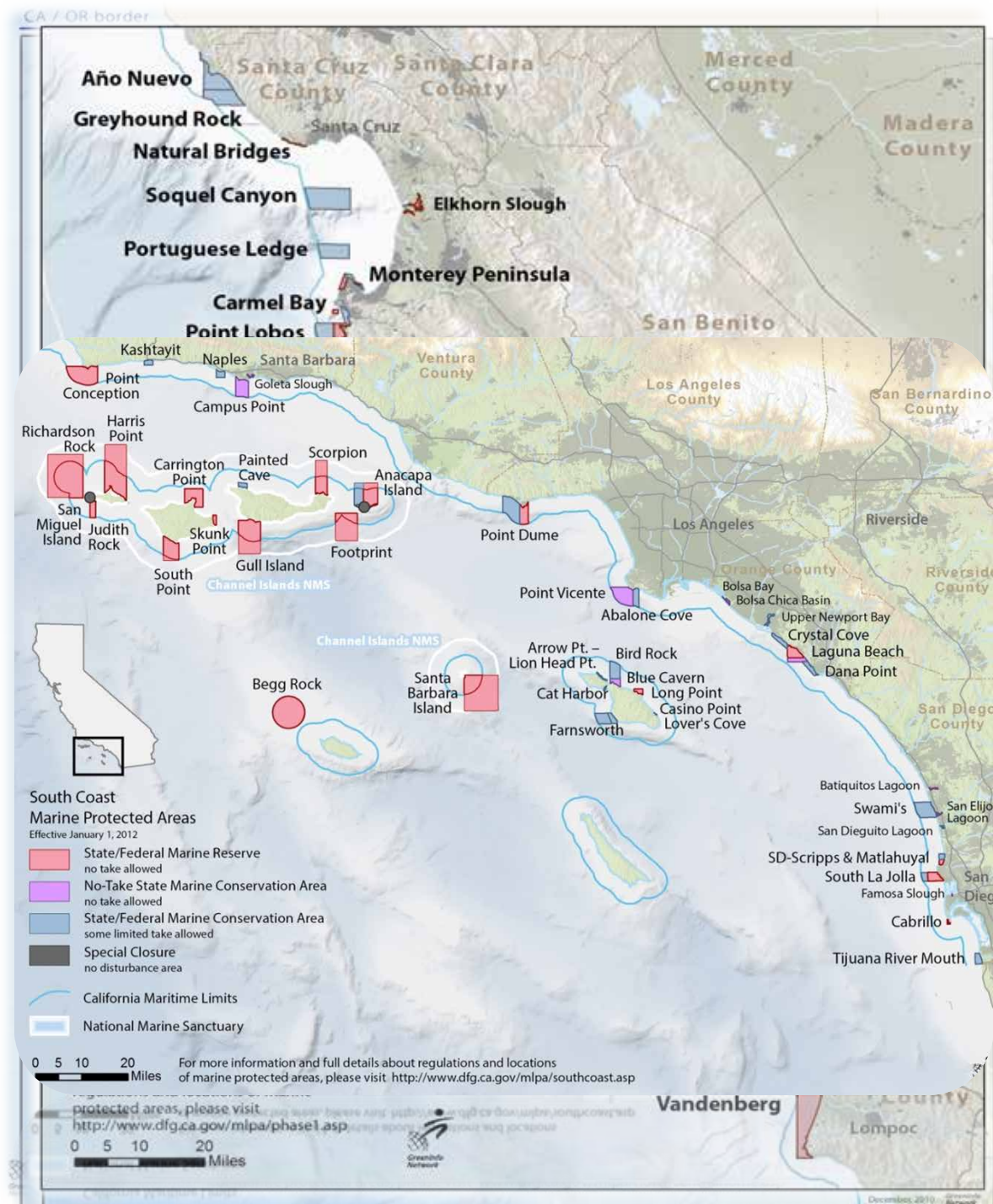
KELP FOREST

ESTUARIES, ROCKY REEF, DEEP CANYONS



124 MARINE
PROTECTED AREAS

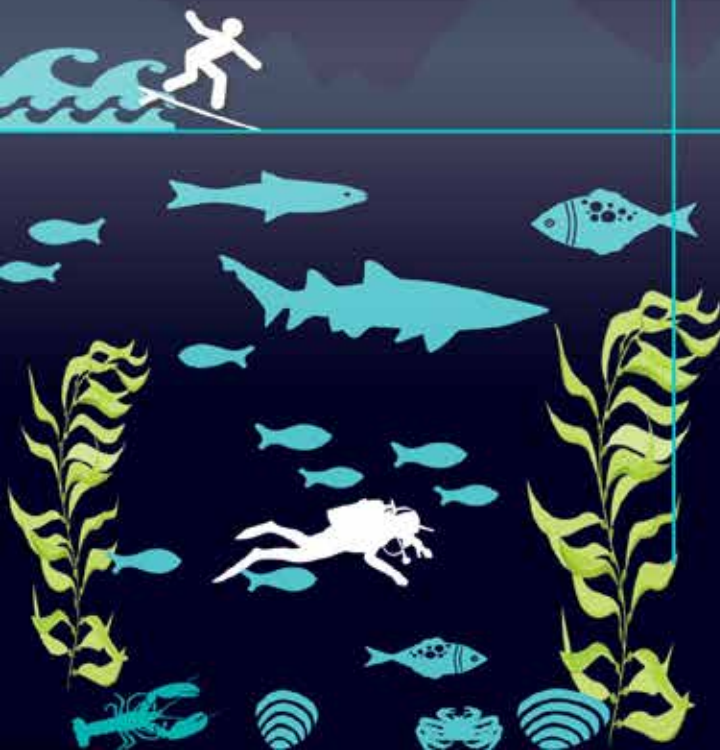
16% OF CALIFORNIA
WATERS
PROTECTED



Features of California's Marine Protected Areas

State Marine Reserve

All extractive activities are prohibited, keeping the area as free from human disturbance as possible to protect and restore ocean habitats and species while still allowing for recreation.



State Marine Conservation Area

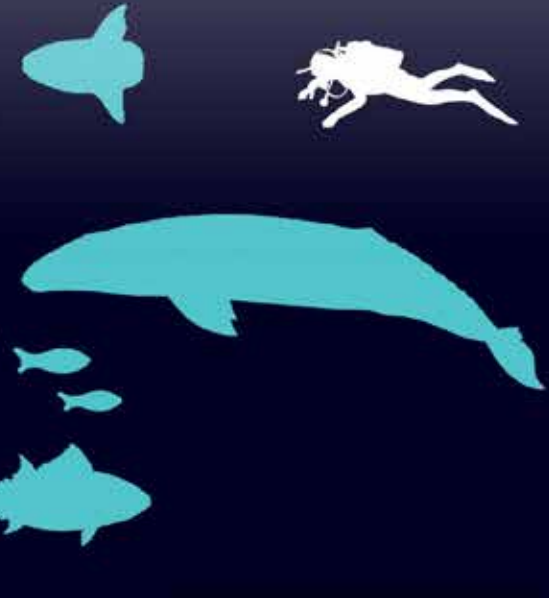
Areas with specific conservation goals that usually allow some limited recreational and/or commercial fishing.



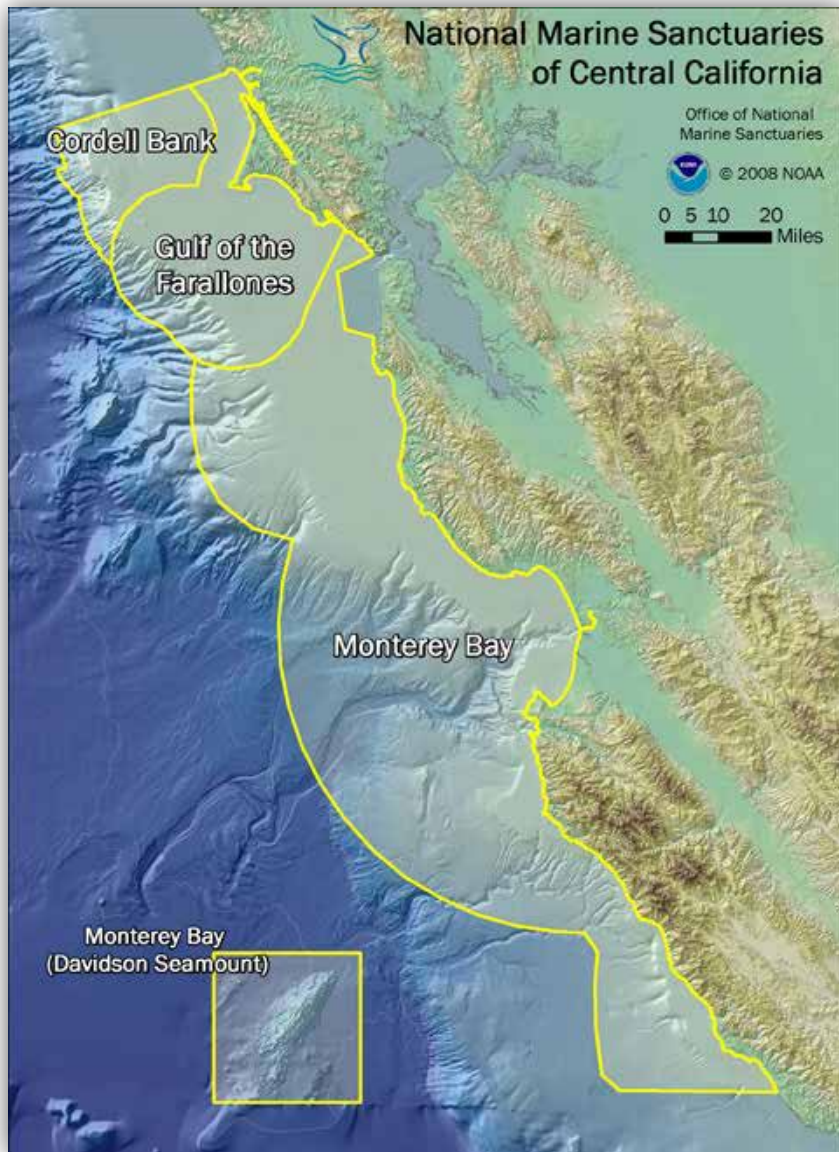
Multi-Use Area National Marine Sanctuaries

All tourism, fishing and aquaculture activities permitted.

Allowed activities may include large scale commercial and artisanal fishing, diving and snorkeling.

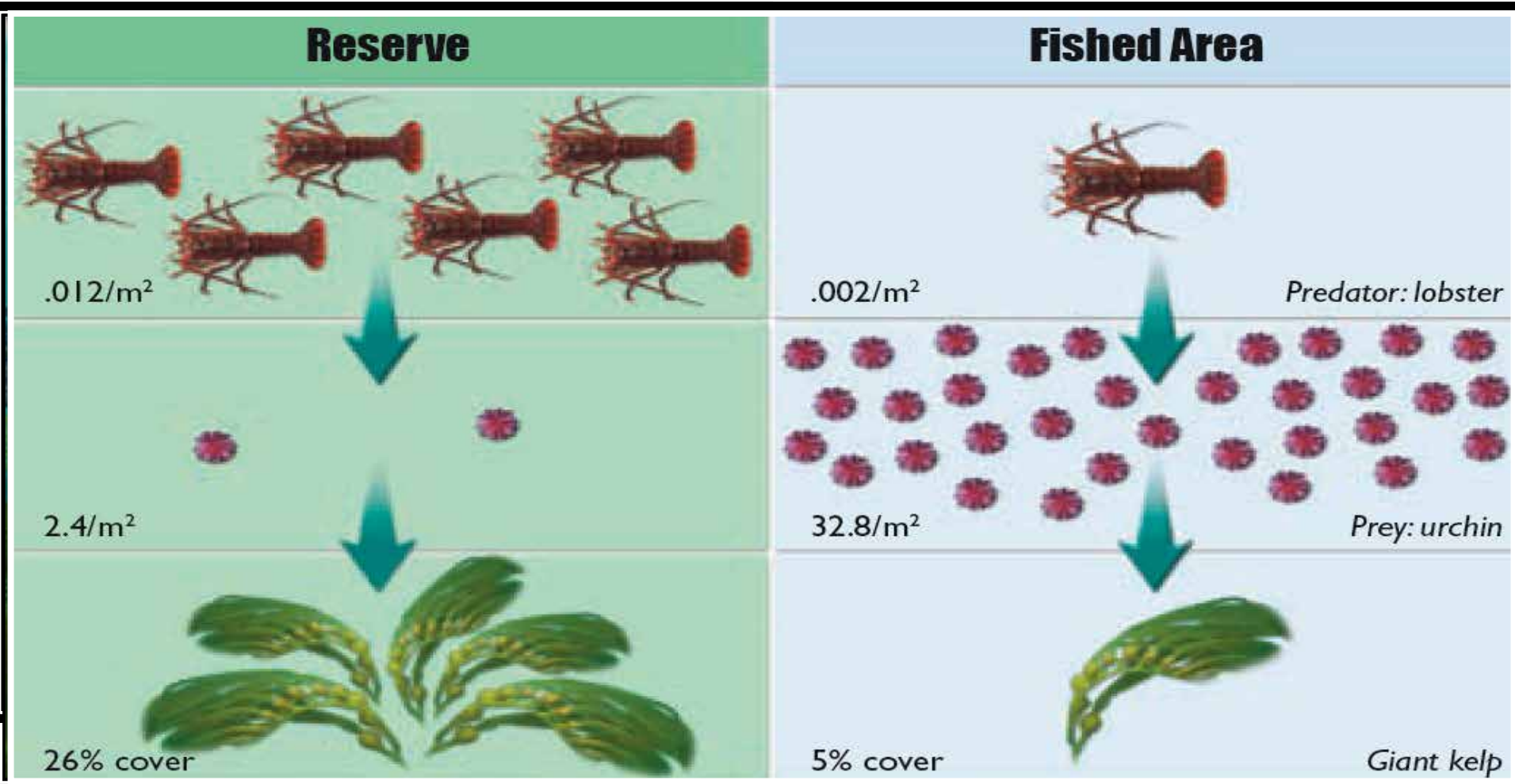


NATIONAL MARINE SANCTUARY VS. MPA: WHAT'S THE DIFFERENCE?



- Federal vs. State
- Established for different purposes
 - State MPAs-biodiversity protection
- Sanctuary has no added fishing regulations
- State MPAs much smaller

SHINING SUCCESSES: Older MPAs glimpse into a possible future for California



In Channel Islands and Pt. Lobos- in place for close to 20 years, kelp forest is recovering following protection of lobster populations.

Before protection, loss of lobsters allowed explosion of sea urchin, which in turn preyed on kelp

BALANCING USES: COMMERCIAL FISHING



Throughout state, MPAs designed with extensive input from commercial fishermen to avoid areas close to port and critical fishing grounds remained open
Recent study shows that in some areas 9 years after being put in place, landings and revenues are increasing. Not the case in all places, but over time the hope is that MPAs create source of future stocks.

SPORT FISHING



- Provided Valuable input: Sport Fishing important activity in California.
- Most MPAs located away from favorite fishing areas.
- Other MPAs prohibit commercial fishing, allow recreational.
- Partners in management

2) EXPLORING WAYS TO WORK TOGETHER



- Jurisdiction of Waterboards, Harbors, Marinas and MPAs overlap
Critical to success of MPAs and water quality
- Overlap in education and outreach
- Funding (Prop 1, Once Through Cooling and other opportunities)
- Permitting considerations of Regional Waterboards inside MPAs
- Coordinating scientific monitoring

WHY MPAS MATTER TO MARINAS?



- May increase boat traffic to nearby harbors and marinas
- As climate change and population growth continues, increased visitation and recreational activities on our coast
- Shift in economic activities
- Changing user group demography

WHY MARINAS MATTER TO MPAS?



- Harbors are prime opportunities for outreach and stewardship
- Entry point to most underwater parks
- Enforcement frontline

EDUCATION AND OUTREACH in MARINAS



- We work closely with many of you on outreach and education
- Target ocean recreation users
- Multi-media approach: print publications, signage, social media, online, relationship building
- Collaborative and cross- messaging approach: (Clean Marinas, Seabird Protection, Marine Mammal Protection, Wildlife Disturbance, Water Quality)

STATEWIDE OUTREACH

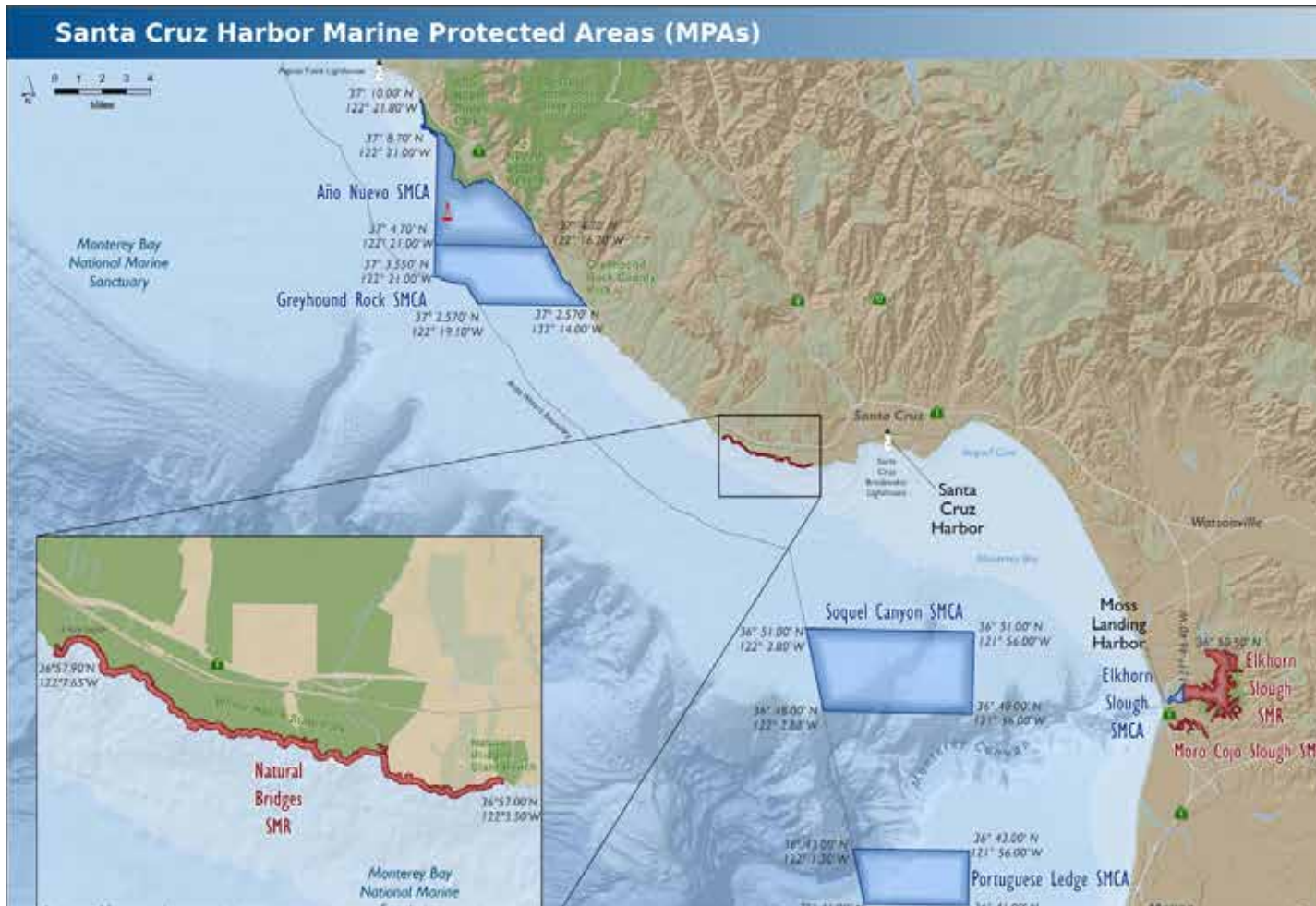


A satellite-style map of the California coastline from Crescent City in the north to San Diego in the south. Numerous locations are marked with yellow pushpins, indicating outreach sites. The pins are distributed along the coast, with a higher density in the central and southern regions. The map shows the coastline, major cities, and various geographical features like rivers and bays.

Crescent City Location TBD
Redwood Creek Parking Lot
Humboldt Bay location TBD
South Cape Mendocino southern border
South of Big Flat Creek mouth
Sea Lion Gulch northern border
Up Ten Mile River @39 32.382
Mouth of Navarro River
Schooner Gulch State Beach
Sea Ranch - Middle Hedge
Point Arena Trailhead
Jenner Boat Launch
Maverick's/Pillar Point Bluff Parking Lot
Main entrance Fitzgerald main ramp
Seal Cove Stairs
Ano Nuevo
Natural Bridges
Monterey Breakwater
Andrew Molera
Leffingwell
Piedras Blancas @VP3 or VP4
Tidelands Park
UCSB pumphouse
Coal Oil Point
Ellwood Bluffs Trailhead
Gaviota State Beach
El Matador State Beach
Point Vicente Interpretive Center Trail
Casino Point Dive Park
Moonlight Beach
Harbor Island Location TBD

Pelican State Beach Trailhead
Fort Ross
Miller Boat Launch
Agate Beach
Pillar Point Harbor
Santa Cruz Harbor
Greyhound Rock
Piedras Blancas
Broad Beach/Trancas Lagoon
D Street Overlook

EDUCATION AND OUTREACH TOOLS



A Guide to Fishing and Marine Protected Areas Santa Cruz Harbor



- Año Nuevo State Marine Conservation Area
- Greyhound Rock State Marine Conservation Area
- Natural Bridges State Marine Reserve
- Elkhorn Slough State Marine Conservation Area
- Elkhorn Slough State Marine Reserve
- Moro Cojo Slough State Marine Reserve
- Soquel Canyon State Marine Conservation Area
- Portuguese Ledge State Marine Conservation Area

Waterproof boating brochures available to harbors and marinas throughout the state
Cross-messaging, resource distribution, getting to the right audience

BROCHURES

A Guide to Fishing and Marine Protected Areas

Ventura Harbor



Vandenberg, Point Conception, Point Dume, Judith Rock, Carrington Point, Skunk Point, and Begg Rock State Marine Reserves

Richardson Rock, Harris Point, South Point, Gull Island, Scorpion, Footprint, Anacapa Island, and Santa Barbara Island State & Federal Marine Reserves

Campus Point and Goleta Slough No-Take State Marine Conservation Areas

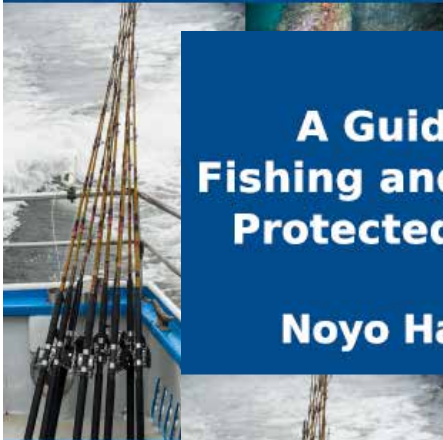
Kashtayit, Naples, Point Dume, and Painted Cave State Marine Conservation Areas

Anacapa Island State & Federal Marine Conservation Area

San Miguel Island and Anacapa Island Special Closures

A Guide to Fishing and Marine Protected Areas

San Francisco Coastal Region



Drakes Estero State Marine Reserve
Estero de Limar State Marine Reserve
Point Reyes State Marine Reserve
Point Reyes Headlands State Marine Reserve
Point Resislar State Marine Reserve
Double Point/Starbuck State Marine Reserve
Duxbury Reef State Marine Reserve
North Farallon Islands State Marine Reserve
North Farallon Islands State Marine Reserve
Southeast Farallon Islands State Marine Reserve
Southeast Farallon Islands State Marine Reserve
Egg (Devil's) State Marine Reserve
Montara State Marine Reserve
Pillar Point State Marine Reserve

A Guide to Fishing and Marine Protected Areas

Noyo Harbor



Ten Mile and Point Cabrillo State Marine Reserves

Ten Mile Beach, Ten Mile Estuary, MacKerricher, and Russian Gulch State Marine Conservation Areas

A Guide to Fishing and Marine Protected Areas

Humboldt Bay Harbor



Reading Rock State Marine Reserve
Reading Rock State Marine Conservation Area
Samoa State Marine Conservation Area
South Humboldt Bay State Marine Recreation Management Area
Sugarloaf Island Special Closure
South Cape Mendocino State Marine Reserve
Steamboat Rock Special Closure

A Guide to Fishing and Marine Protected Areas

Dana Point Harbor



Laguna Beach and Long Point State Marine Reserves

Point Vicente, Bolsa Chica Basin, Laguna Beach, Casino Point, and Blue Cavern Onshore No-Take State Marine Conservation Areas

Abalone Cove, Bolsa Bay, Upper Newport Bay, Crystal Cove, Dana Point, Lover's Cove, Blue Cavern Offshore, Arrow Point to Lion Head Point, Cat Harbor, Farnsworth Onshore, and Farnsworth Offshore State Marine Conservation Areas

HARBOR SIGNAGE AT > 50 LOCATIONS

Conserving California's Coastal Treasures



California's marine protected areas (MPAs) conserve, restore, and improve the health of our ocean, similar to national parks and forests on land. The California MPA network includes MPAs and other protected areas. Each area is unique in its purpose and allowed uses.

Protected areas around Emeryville Marina are:

- **Point Reyes, Estero de Limantour, North Farallon Islands, Southeast Farallon Island, and Montara State Marine Reserves (SMR)**
No take, damage, injury, or possession of any living, dead, or cultural marine resource is allowed.
- **Drake's Estero, Point Reyes, Duxbury Reef, Southeast Farallon Island, and Pillar Point State Marine Conservation Areas (SMCA)**
Some recreational and/or commercial take of marine resources may be allowed.
- **Point Reyes Headlands, Point Resistance Rock, Double Point/Stormy Stack, North Farallon Islands, Southeast Farallon Island, and Egg (Devil's Slide) Rock Special Closures**
Prohibits access or restricts boating activities in waters adjacent to seabird nesting and rookery sites, and marine mammal haul-out sites.

**MPAs – Good for the Ocean; Good for You!
Know the Rules Before You Head Out.**

For Ocean Fishing Laws and Regulations, go to: www.dfg.ca.gov/marine/regulations

Additional MPAs exist within San Francisco Bay. For MPA boundaries, maps, coordinates, and allowed uses, go to: www.dfg.ca.gov/marine/MPA



Emeryville Marina:
(510) 654-3716

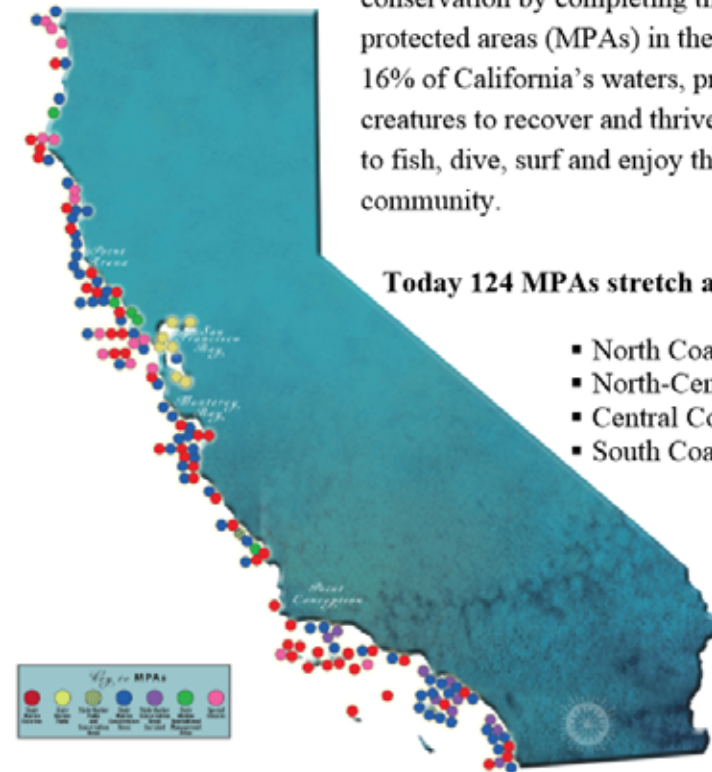
Report Violations:
(888) 334-CaTIP, (888) 334-2258

CROSS MESSAGING OPPORTUNITIES:
Clean marinas, pumpout stations, coast guard, contact information

TAILORED WEB PAGES

MPAs Near Humboldt

Situated along the Pacific coast in Northern California's rugged coastal mountain range, Humboldt County is known for its remoteness, old growth redwood trees and 110 miles of coastline. Humboldt Bay, located in the middle of Humboldt County is the largest protected body of water on the West Coast between San Francisco Bay and Puget Sound. Home to more than 100 plant species, 300 invertebrate species, 100 fish species, and 200 bird species, the bay and its complex system of marshes and grasses support thousands of birds and local shore birds. Additionally, the nearby coastal waters offer some of the best boating, fishing and recreational opportunities along the California Coast.



In 2012, California became an international leader in marine conservation by completing the largest network of protected areas (MPAs) in the world. Today, 124 MPAs cover 16% of California's waters, providing a safe haven for creatures to recover and thrive. These areas are open to fish, dive, surf and enjoy the benefits for the community.

Today 124 MPAs stretch along the California coast.

- North Coast
- North-Central Coast
- Central Coast
- South Coast

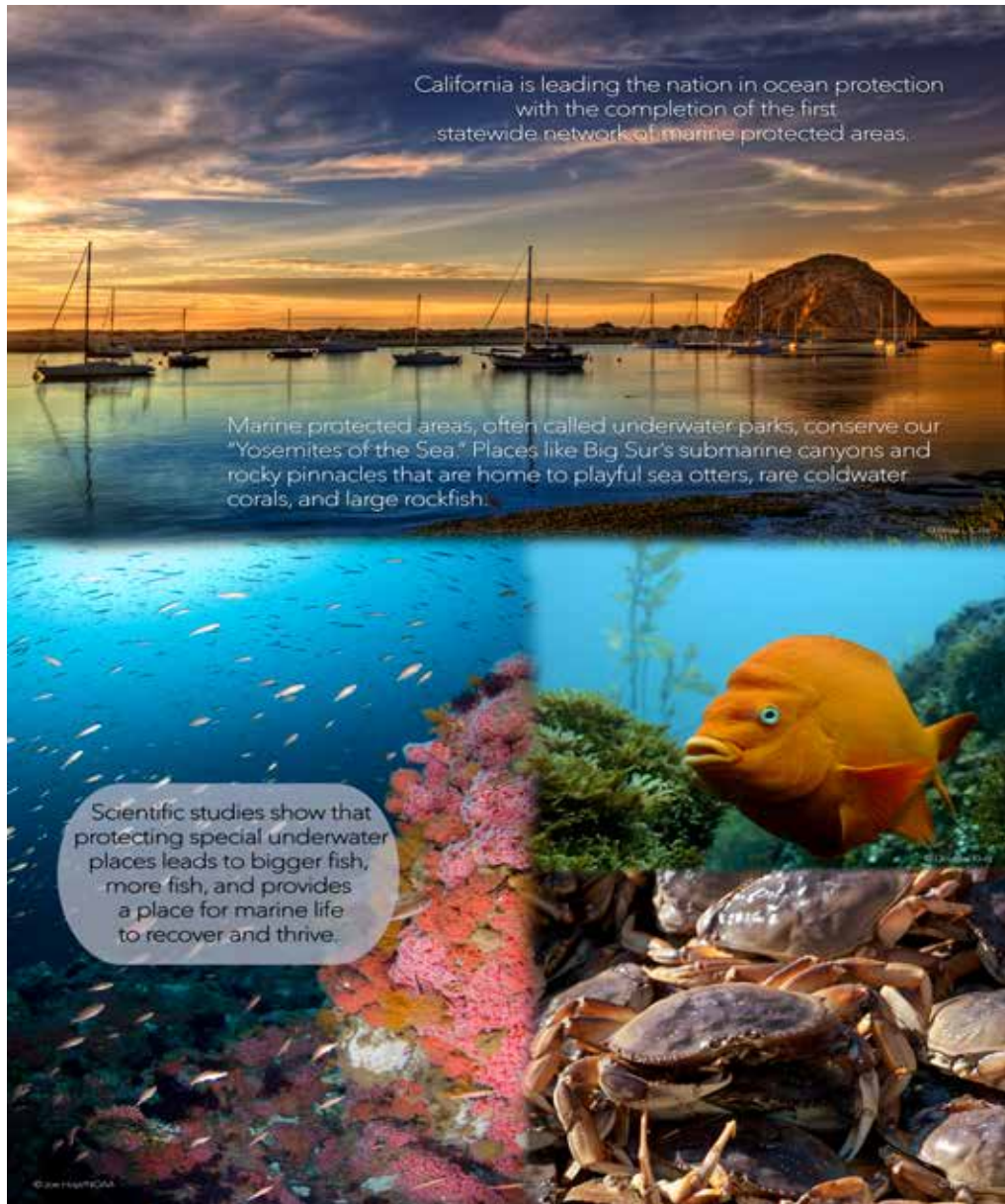
ON-LINE OUTREACH

Google Earth tours

The screenshot shows the Google Earth Tour Builder interface. At the top, it says "Tour Builder BETA a Google Earth experiment" and has a "Sign in" button. Below that, the tour is titled "Central Coast MPA Tour" with a "Share" button and a "CREATE NEW TOUR" button. On the left, a list of stops includes: Elkhorn Slough State Marine Conservation Area (with a red pin icon), Elkhorn Slough State Marine Reserve (with a blue pin icon), Elkhorn Slough National Estuarine Research Reserve (with a blue pin icon), Moro Cojo Slough State Marine Reserve (with a blue pin icon), and Portuguese Ledge State Marine Conservation Area (with a blue pin icon). The main content area shows a photo of seals with the text "Elkhorn Slough State Marine Conservation Area" and "1 of 10". Below the photo are "Back" and "Next" buttons, and a "6 of 34" indicator. At the bottom, there are links for "© 2015 Google Terms of Service Privacy Policy Feedback" and "Learn about 3D support in Tour Builder." The right side of the interface shows a satellite map of the Elkhorn Slough area with several colored pins (red, blue, white) and a red shaded region representing the conservation area. Data sources "Data CSUMB SFML CA OPC" and "Data MBARI" are visible at the bottom of the map.

Chamber of Commerce, Visitor websites, Harbor websites, ocean recreation businesses
Are there linkages that we should be making?
Are there websites that we should be cross-promoting?

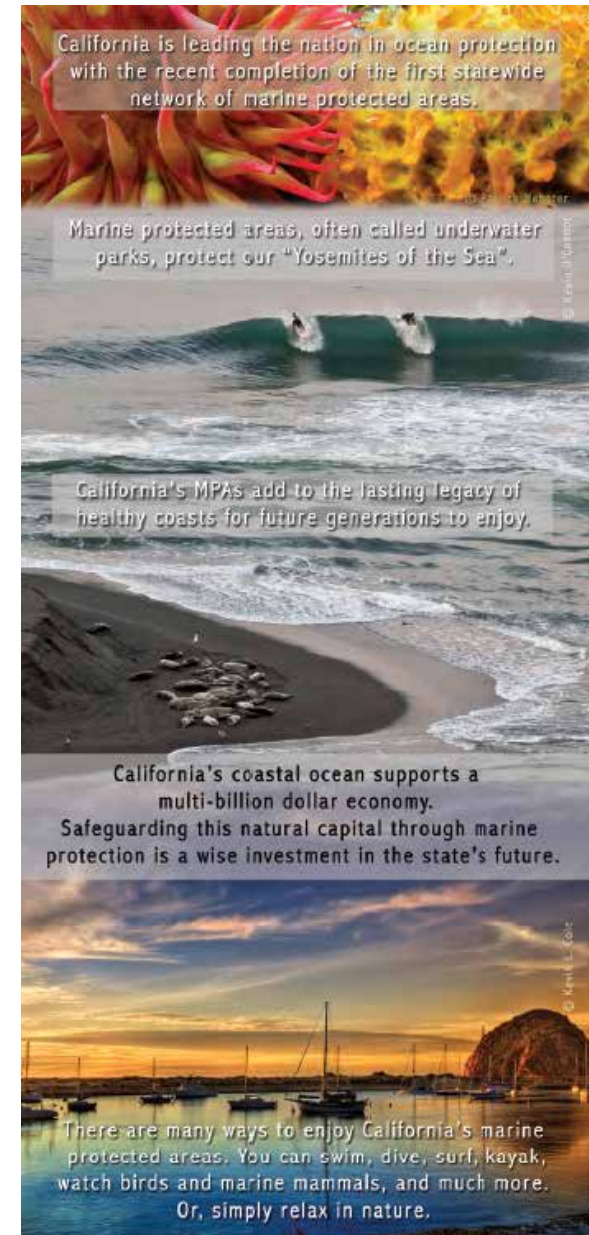
TARGETING TRADE SHOWS AND BOAT SHOWS



California is leading the nation in ocean protection with the completion of the first statewide network of marine protected areas.

Marine protected areas, often called underwater parks, conserve our "Yosemites of the Sea." Places like Big Sur's submarine canyons and rocky pinnacles that are home to playful sea otters, rare coldwater corals, and large rockfish.

Scientific studies show that protecting special underwater places leads to bigger fish, more fish, and provides a place for marine life to recover and thrive.



California is leading the nation in ocean protection with the recent completion of the first statewide network of marine protected areas.

Marine protected areas, often called underwater parks, protect our "Yosemites of the Sea".

California's MPAs add to the lasting legacy of healthy coasts for future generations to enjoy.

California's coastal ocean supports a multi-billion dollar economy. Safeguarding this natural capital through marine protection is a wise investment in the state's future.

There are many ways to enjoy California's marine protected areas. You can swim, dive, surf, kayak, watch birds and marine mammals, and much more. Or, simply relax in nature.

MARINA EXHIBITS

WELCOME to Pillar Point Harbor



Working and Playing on the Water

Enjoy the history and activities of Pillar Point. You can buy fresh fish, watch commercial fishing fleets, rent a kayak, or go whale watching. All from right here.

Pillar Point is home to a hundreds of recreational and commercial boats. With 369 berths tucked in behind a protective breakwater, Pillar Point is one of the safest harbors in the country.

Information not highlighted above can be found on adjacent signs.

A Gateway to the Ocean's Bounty



Pillar Point Harbor is a gateway to the "Serengeti of the Sea", one of the most productive, diverse stretches of coastline. These underwater treasures are protected by a state network of marine protected areas and federally designated national marine sanctuaries. To learn more see the marine protected areas section of this kiosk.

Harbor Celebrations



The Harbor hosts many public events including the annual Mavericks surfing competition, and the Christmas boat decorating contest. Check out the harbor website for a schedule of events.

Clean Marina Program



Pillar Point Harbor proudly participates in the Clean Marinas program. Clean Marinas provide clean facilities to the boating community and protect waterways from pollution. At Pillar Point, we work hard to contain petroleum products, reduce boat sewage discharge, marinas debris and hazardous materials.

Pillar Point Harbor Saves Lives! Search and Rescue Operations



Pillar Point Harbor provides search and rescue services to all boaters. Our well-trained and dedicated crew performs an average of 110 rescues each year, saving many lives and millions of dollars in boats and equipment.



Built as a Safe Haven

Coastal residents wanted a breakwater built to protect their vital fishing fleet, and San Mateo County responded. With help from Army Corps of Engineers, work started after World War II.

For more information visit www.smarharbor.com



TURNING THE TIDE CALIFORNIA'S UNDERWATER PARKS

Oregon

California leads the nation in safeguarding our ocean habitats and marine life. New hope is being secured for ocean ecosystems as California's network of marine protected areas, or underwater parks, establishes safe havens for our future.

COASTAL TREASURES

- ★ Special places such as kelp forests, rocky reefs, and coastal wetlands
- ★ Over 124 state marine protected areas and special closure zones (16% of California's coastal waters)
- ★ Homes for sea otters and elephant seals; rockfish and garibaldi; abalone and spiny lobsters; and millions of other marine organisms
- ★ Improved opportunities for research, recreation, exploration and education

Key to MPAs

State Marine Reserve	State Marine Park	State Marine Conservation Area	State Marine Sanctuary	State Marine Protected Area	State Marine Reserve	State Marine Sanctuary	State Marine Conservation Area	State Marine Protected Area
----------------------	-------------------	--------------------------------	------------------------	-----------------------------	----------------------	------------------------	--------------------------------	-----------------------------





- County by county locally organized state, federal, local agencies, tribes
- Education and outreach, Enforcement and compliance, and Research and Monitoring
- Please join in- ask for more information to get on list serve and participate

3) STORMWATER IMPROVEMENT PROJECT HARBORS AND MARINAS CALIFORNIA-WIDE

CA.GOV

State of California
Ocean Protection Council

Search

Home About Meetings Programs Funding Documents News

Proposition 1: Water Quality, Supply, and Infrastructure Improvement Act of 2014

The Water Quality, Supply, and Infrastructure Improvement Act of 2014 (Prop 1) was approved by voters in November 2014 (California Water Code (CWC) Division 26.7). Funding from Prop 1 is intended to fund projects that provide more reliable water supplies, restore important species and habitat, and develop a more resilient and sustainably managed water system (water supply, water quality, flood protection, and environment) that can better withstand inevitable and unforeseen pressures in the coming decades.

Prop 1 Chapter 6, "Protecting Rivers, Lakes, Streams, Coastal Waters, and Watersheds", allocates \$30 million to the OPC for a competitive grant program for multibenefit ecosystem and watershed protection and restoration projects in accordance with statewide priorities, CWC §79730 and §79731(d). It is the intent of the OPC to fund projects that meet Prop 1 criteria and fulfill of the mission of the OPC to ensure that California maintains healthy, resilient, and productive ocean and coastal ecosystems for the benefit of current and future generations.

More information about Proposition 1 can be found at the [California Natural Resources Agency's Bond Accountability Website](#).

Round 1 Solicitation Period Closed: December 1, 2015

Round 2 Solicitation Period: early 2018*

PROP 1

GOVERNOR EDMUND G. BROWN, JR.
WATER BOND 2014
RELIABILITY | RESTORATION | RESILIENCE

Timeline- Late 2017 RFP
Funding 2018
Opportunities for coordination

MARINAS: STRATEGIC FRONTLINE OF DEFENSE AGAINST NONPOINT SOURCE POLLUTION



Over 400 statewide

Improve water quality and critical in restoring and protecting important coastal species and habitats

Could help MPAs meet their statutory goals

Water quality: reflection of pollutants (sewage, parking lots, dockside cleaning, fuel and boat maintenance)

Multiple upstream sources

EQUIPMENT OFFERED



- Trash skimmers
- Bilge pumpout stations
- Solar trash compactors
- Cigarette butt containers
- Oil response trailers

PROPOSAL



- Install nonpoint source prevention equipment spanning from Crescent City to San Diego
- Will improve coastal water quality in at least 18 Marine Managed Areas (including ASBS, MPAs, National sanctuaries, national estuaries)
- Tailored menu of equipment at each harbor to account for coastal morphology, progress on implementing clean boating standards and stressor loading.

Storm Drain Improvements and Trash Capture Devices

Product- FleXstorm Pure: Permanent Inlet Protection

Product Description-

FleXstorm storm drain filter systems will prevent oil, sediment and other debris from entering storm drains. Filters range from 80%-99% removal efficiency of street-sweep sized particles.



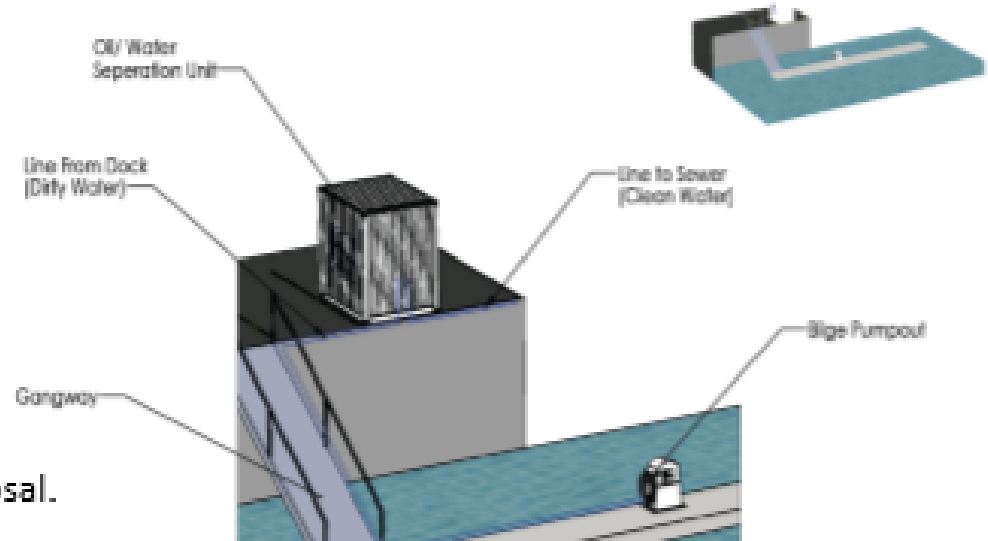
For More Information: <http://www.inletfilters.com/products/flexstorm-pure-permanent-inlet-protection>

Bilgewater Pumpout System

Product- Keco Bilge Pump

Product Description-

The Keco Bilge Pump will remove and process recreational and commercial vessels bilge water to levels, which exceed the guidelines for ultimate discharge to municipal sewage connection. The cutting edge system will collect and store waste oil for proper removal and disposal.



QUESTIONS FOR YOU?



- Can you suggest locations?
- Who else can we coordinate with?
- Suggestions for dealing with CEQA?
- Suggestions for other types of equipment?
- Other ways to collaborate?

THANK YOU FOR ALL YOU DO IN SUPPORT OF OUR OCEAN



WWW.CALIFORNIAMPAS.ORG